



School District of Edgar

Assessments

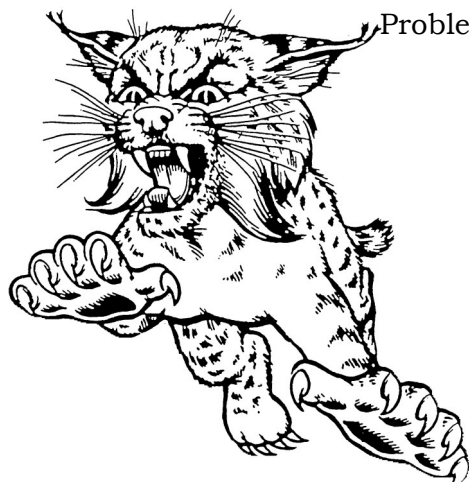
2023-2024

Elementary,
Middle & High
School

FastBridge

4K—8th Grades

- Tests Reading & Math Skills.
- Gives teachers more precise data to identify at-risk students and intervene quicker to prevent students from falling even further behind.



*BASC/BESS

7th & 9th-11th Grades

- Assess the behavioral and emotional risks and overall mental health status.
- Questions refer to Adaptive Skills, Externalizing Problems, Internalizing Problems, and School Problems.

FORWARD

3rd-8th, & 10th Grades

- Tests English, Math, Science & Social Studies.
- Gauges college and career readiness according to the Wisconsin Academic Standards.

B.E.S.T.

Elementary

- Assess the extent to which children exhibit social-emotional and behavior concerns in the school setting, which distracts them from learning.
- Data is used for academic and behavioral growth in school.

Calendar of Dates:

Sept. 18-29	Fast-Bridge
Oct. 23-Nov. 6	BEST
Oct. 30-Nov. 10	BASC/BESS
Jan. 15-31	Fast-Bridge
Mar. 4-15	BASC/BESS
March 19 (updated)	ACT
March 18-April 26	PreACT Secure
Apr. 1-12	FORWARD
Apr. 1-12	DLM
April 1-15	BEST
May 3-14	Fast-Bridge

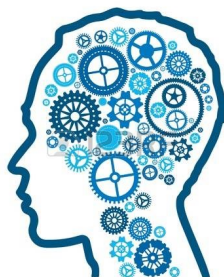
**If you wish to opt-out your student from these screeners, please contact the school.*

ACT

ACT Plus Writing

11th Graders

- Tests English, Math, Reading, Science & Writing.
- Can be used when applying to college.



PreACT Secure

9th—10th Grades

- Assesses student readiness in English, Math, Reading, Science, and Writing.
- Scores are used in context of college and career readiness.

For more information, please visit our Assessment Website:
<https://sites.google.com/gapps.edgar.k12.wi.us/assessments/home>